

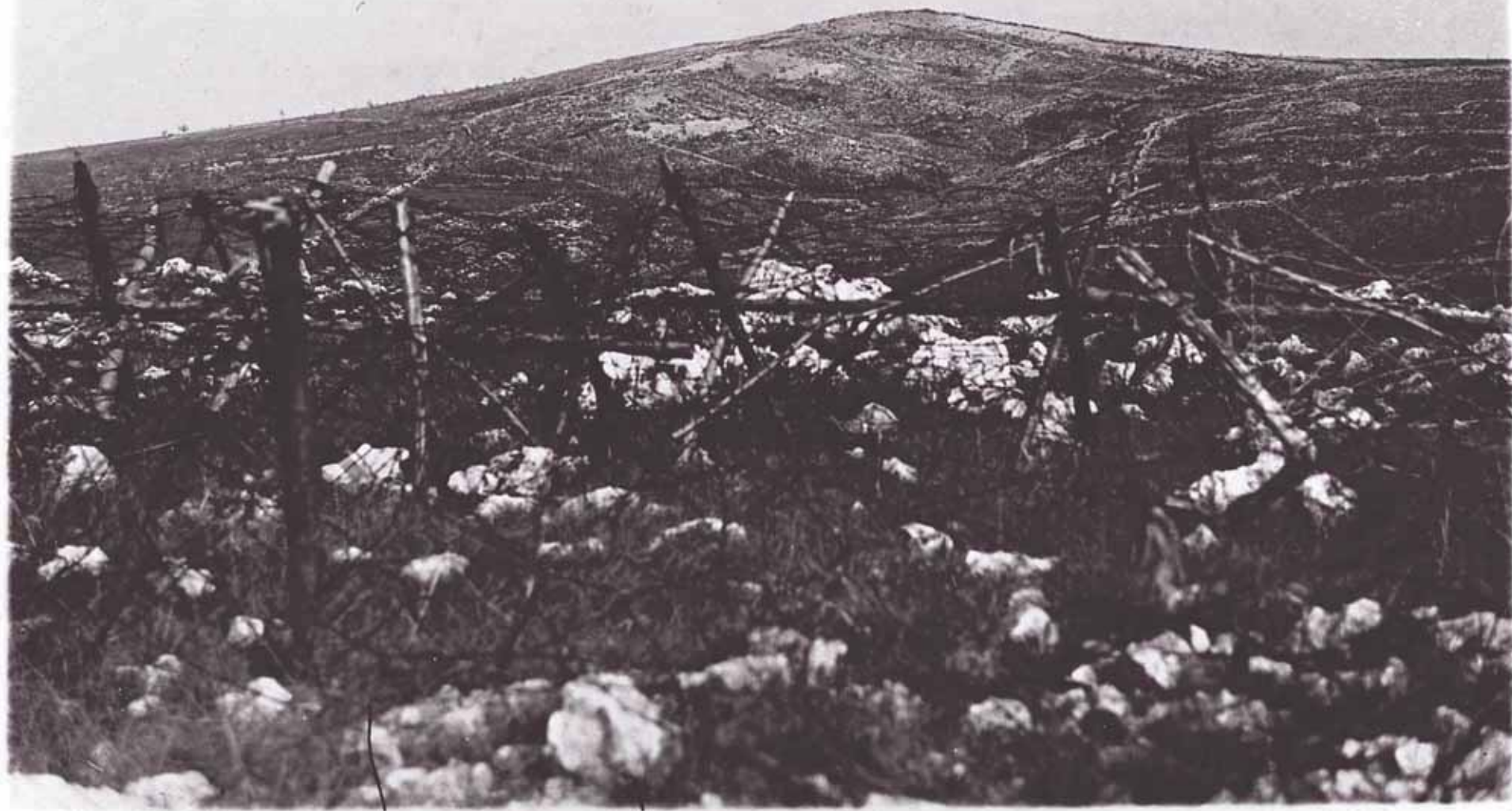


Stemmadia reticulata "amstros"
and carnos (quartz 1611).



S. Michele - trincea "Chiesa diruta."

S. Michele - cima 44









Faizi Zrib, Kote 26



Kote 464 gesehen vom Fauti baid



Minenwerfer - Doline am Faidi Zrib



↳ ferrovia p. Trieste

↳ l' Hermada

Mt^e S. Michele

Fajti. hvih



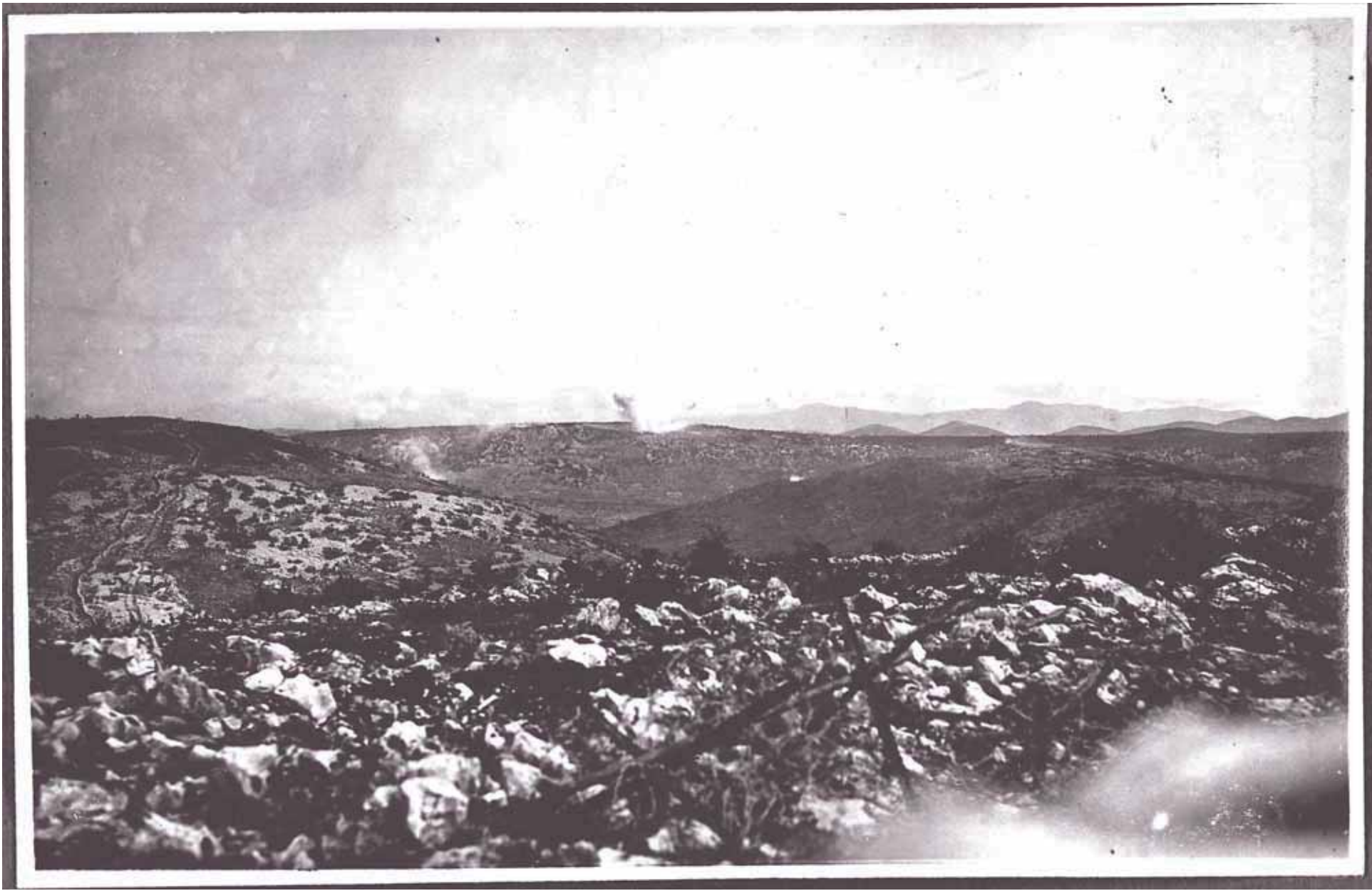
Sočská fronta na podzim 1916. Kóta 208 u
Nova Vas

italské zákopy

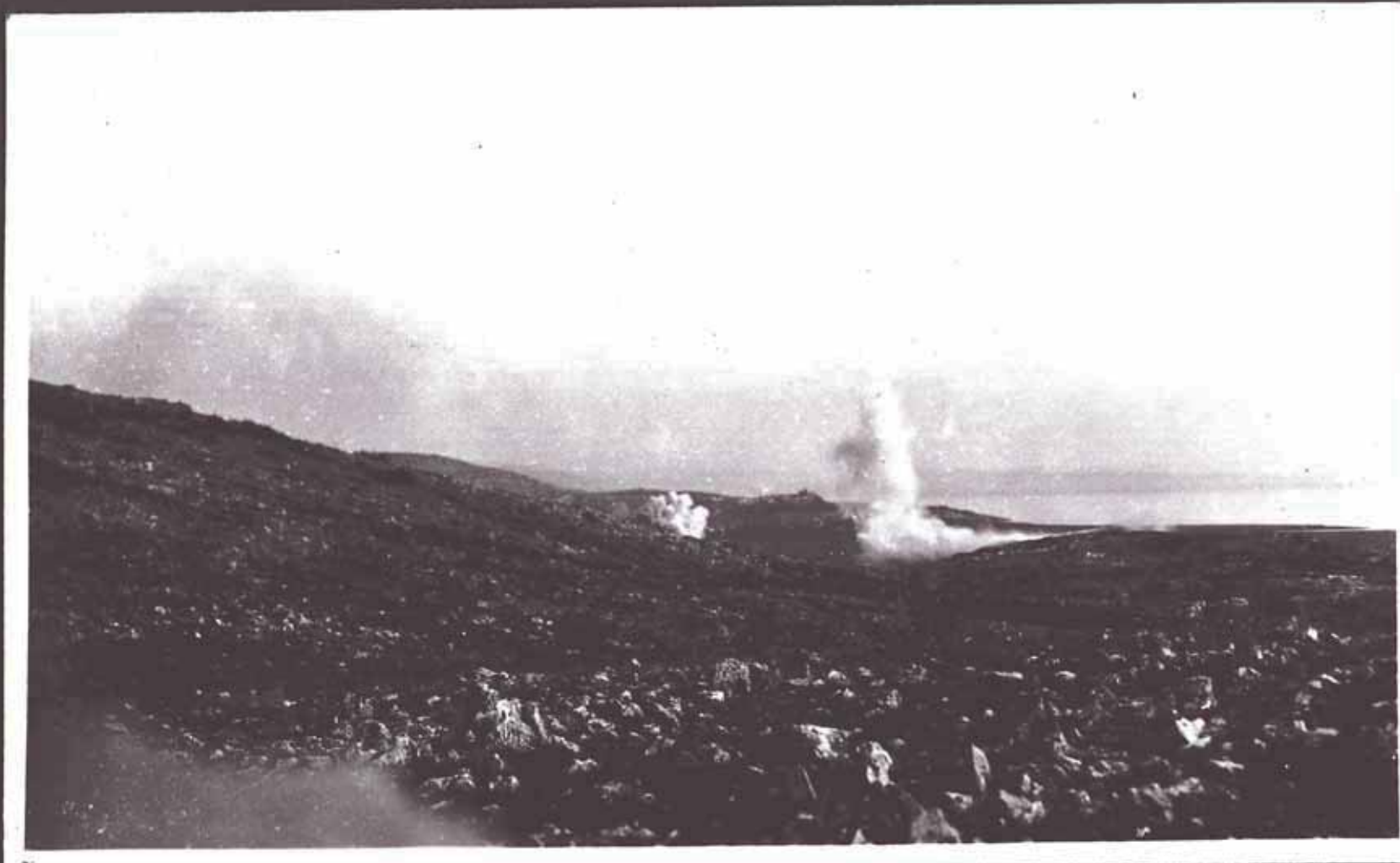


St. Martino





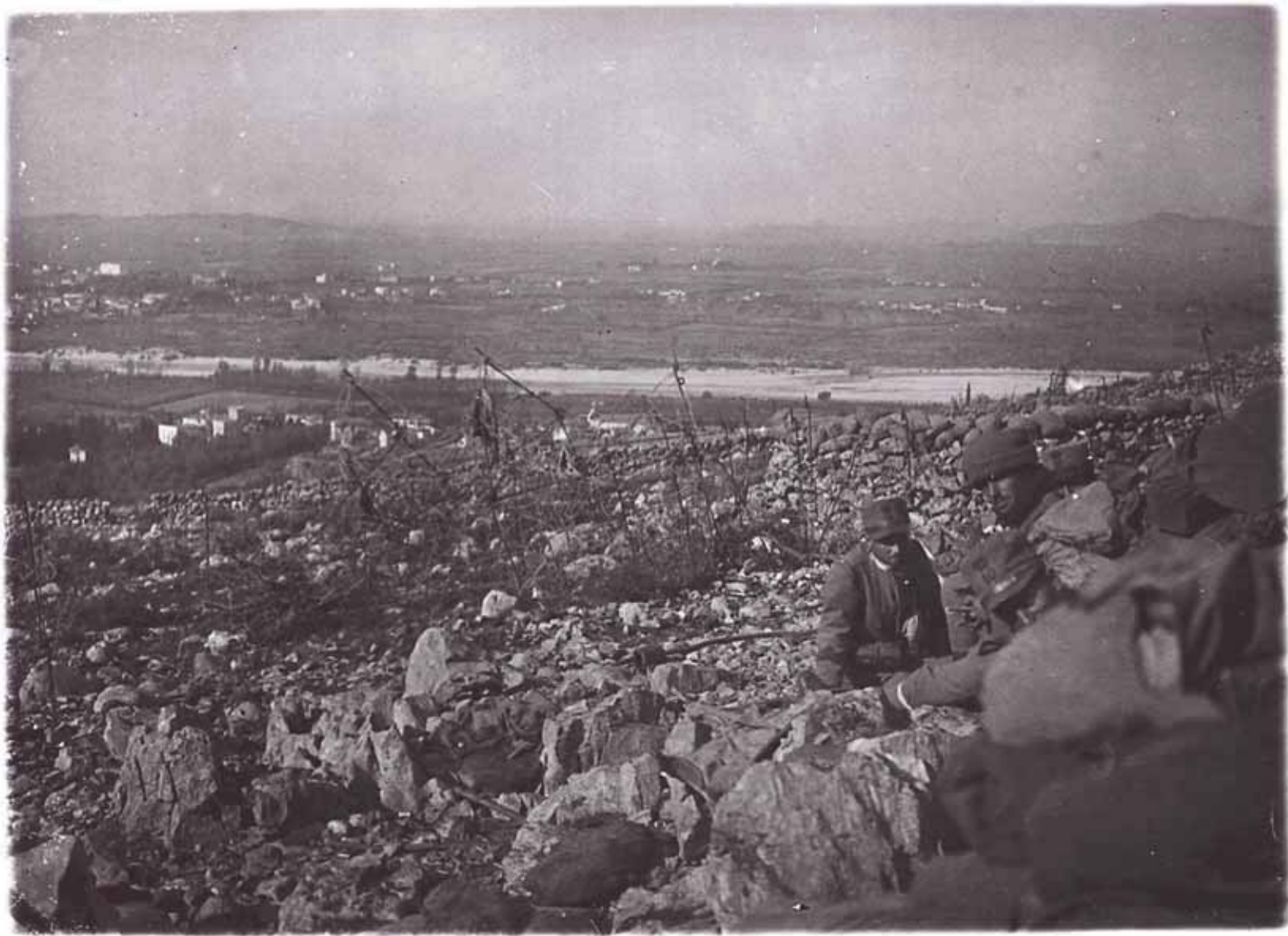
Bombardamento delle posizioni austriache verso il mare = ottobre 1916



↑ nello sfondo il castello di Duino





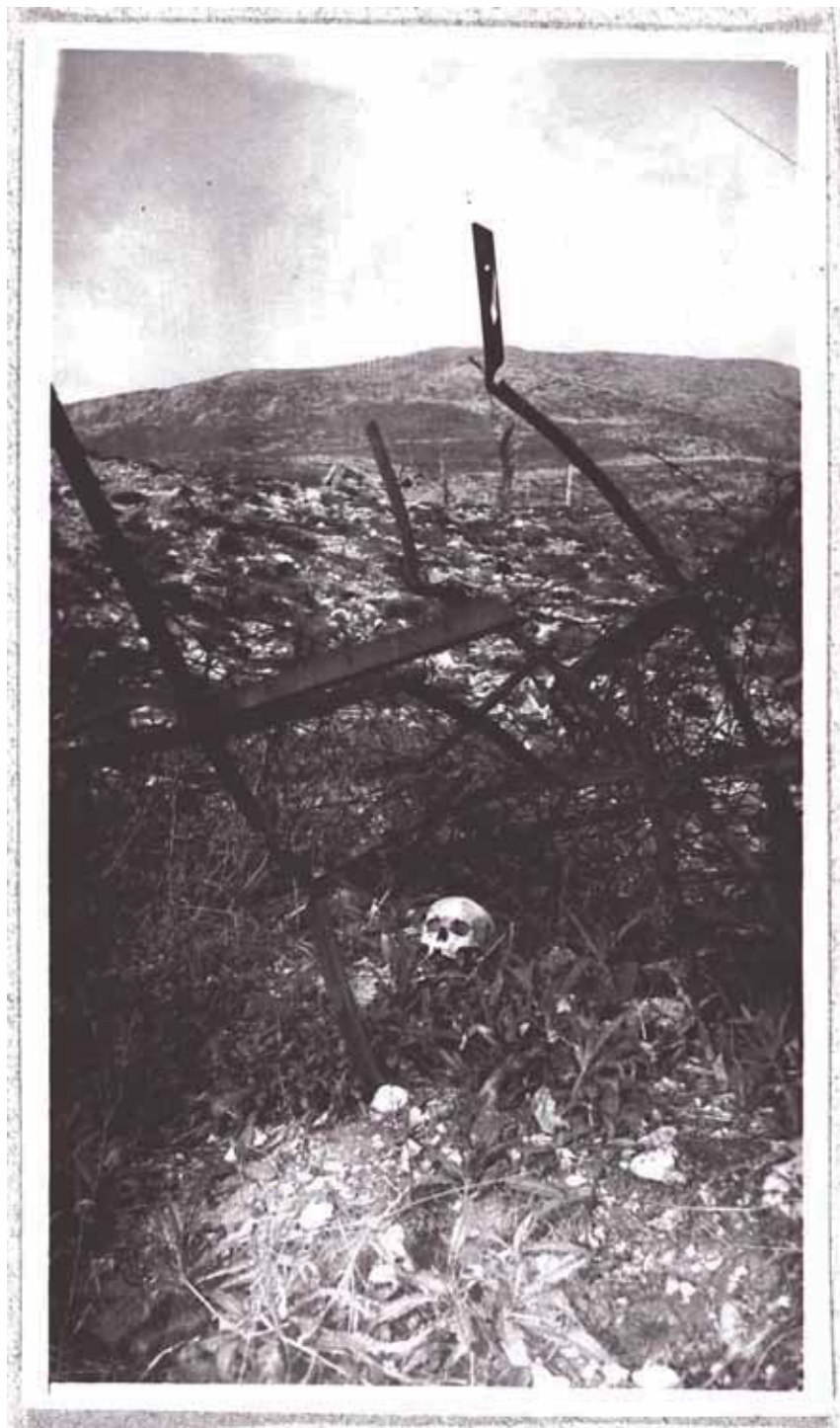


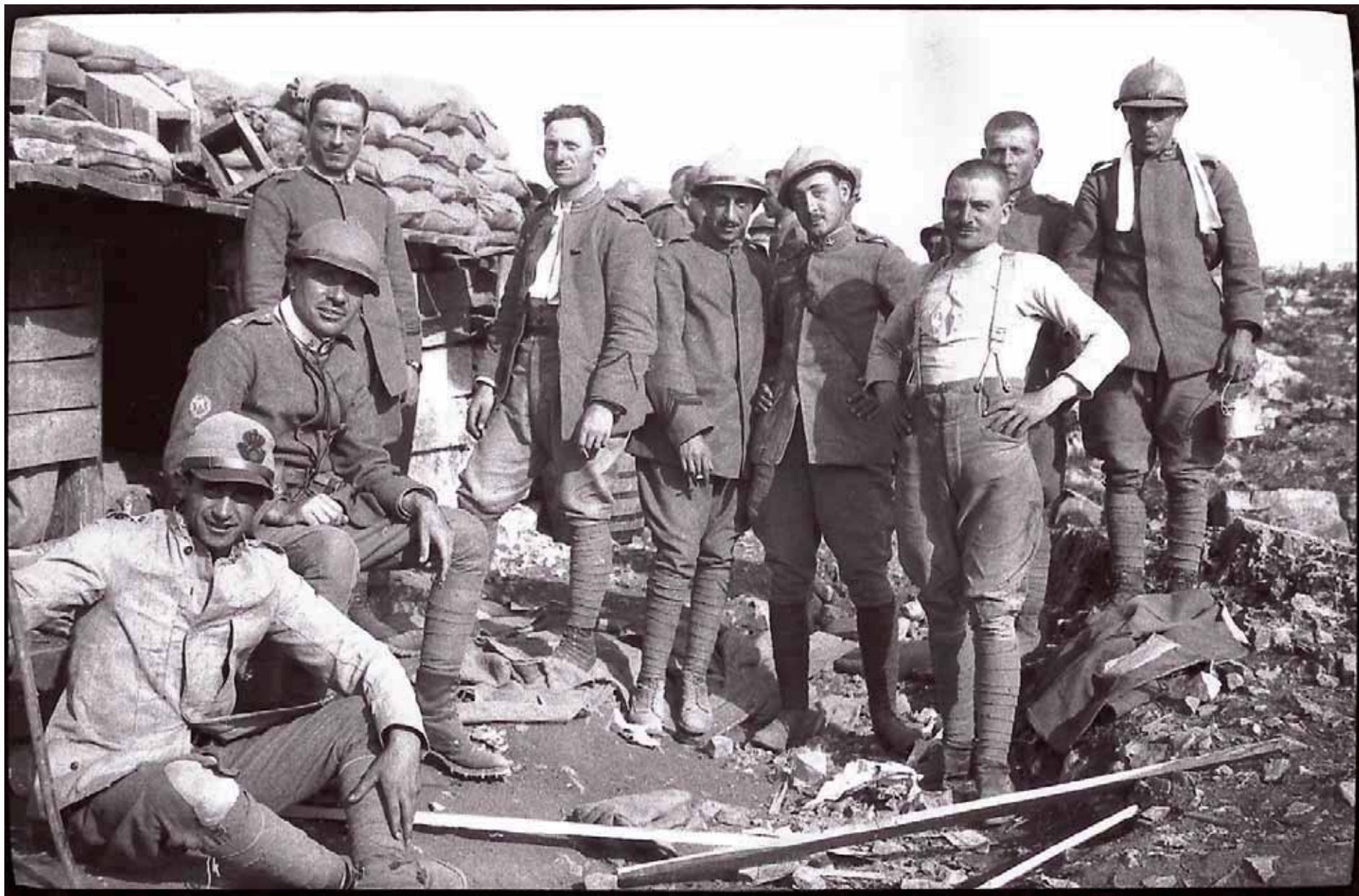
Soldati inglesi in Tunisia

DOPO LA BATTAGLIA TRINCERAMENTO SUE S. MICHELE.





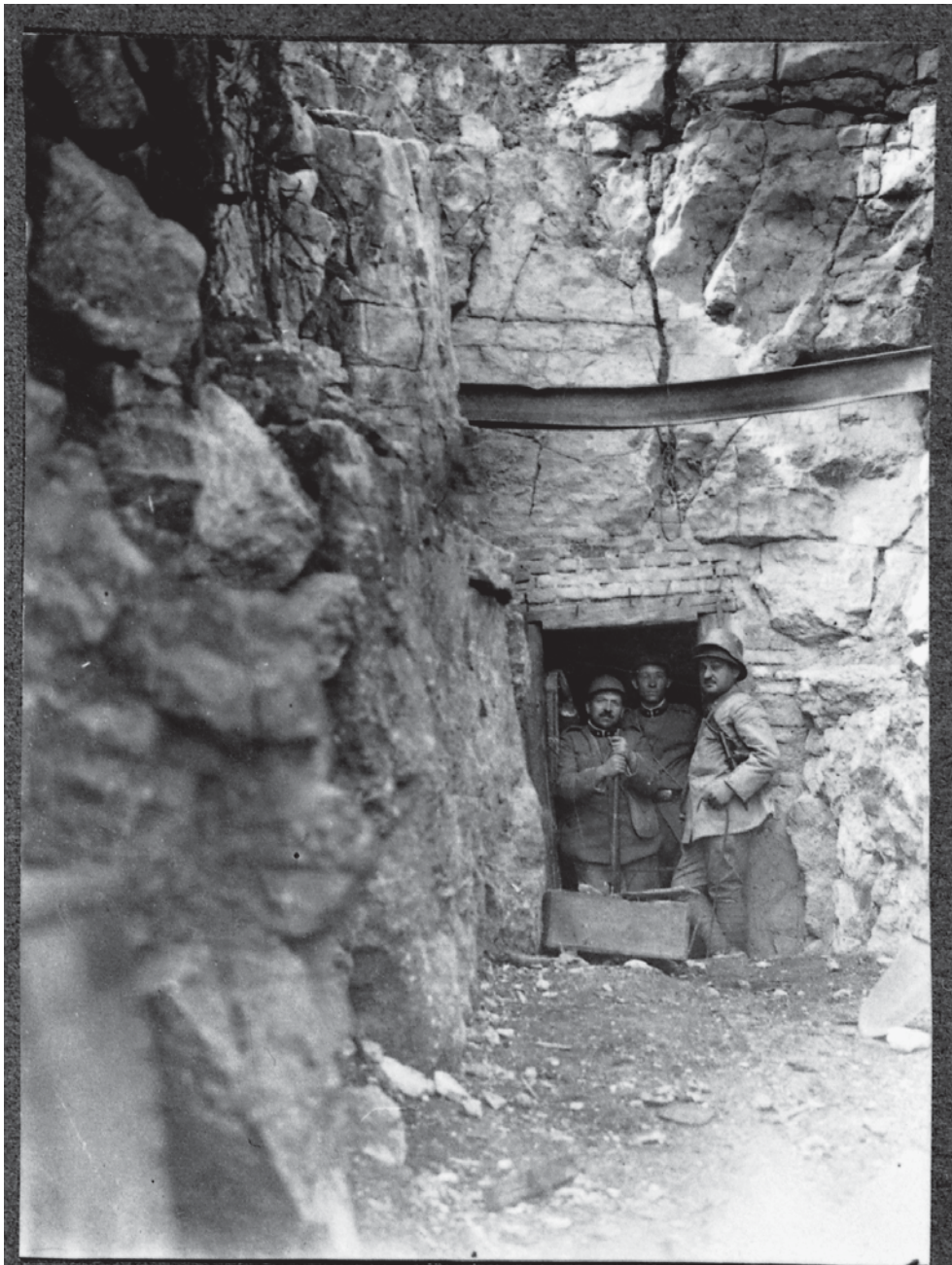




caverna scavata in fondo a una dolina







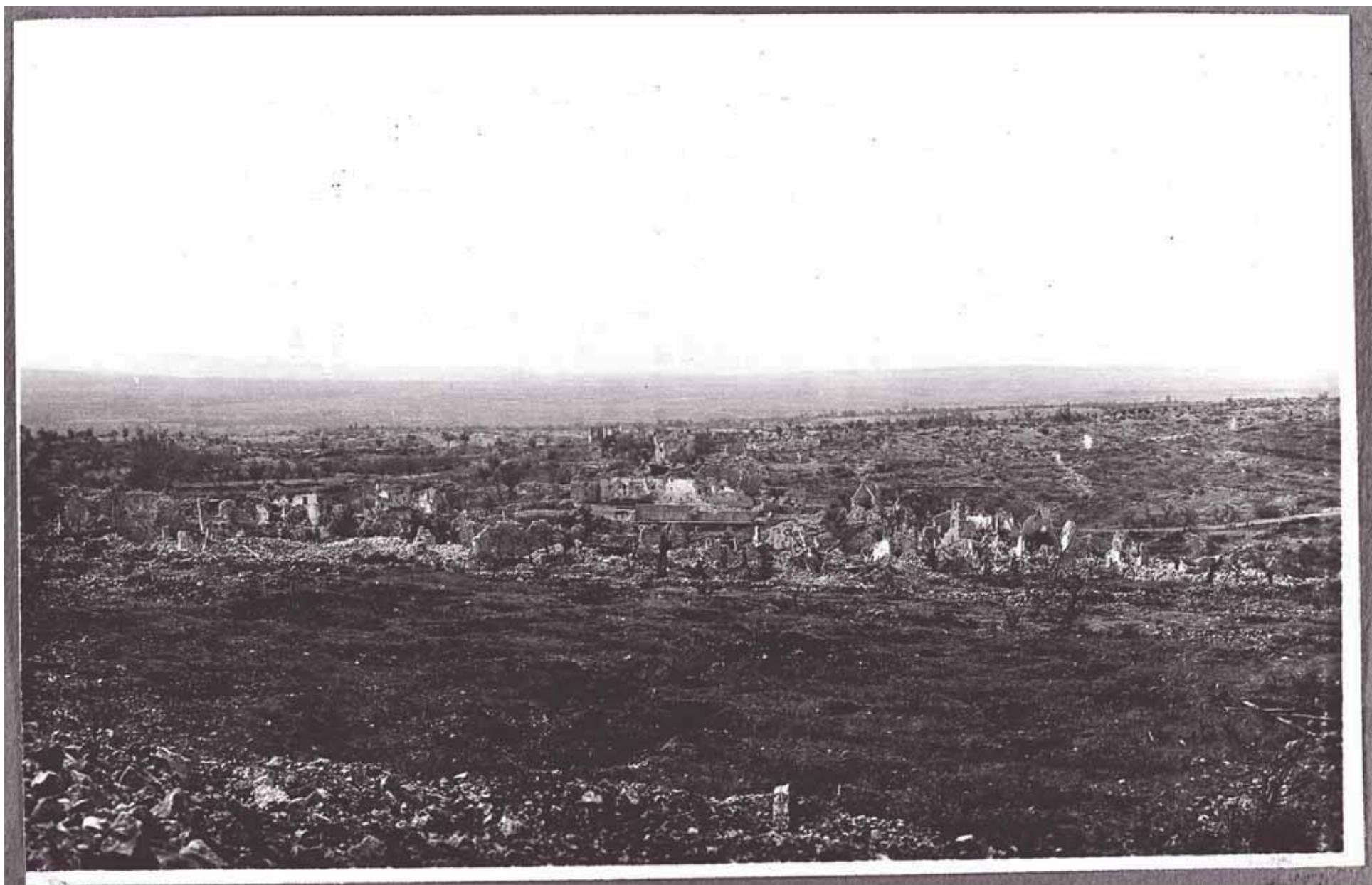
In caverna sub S. Antonio



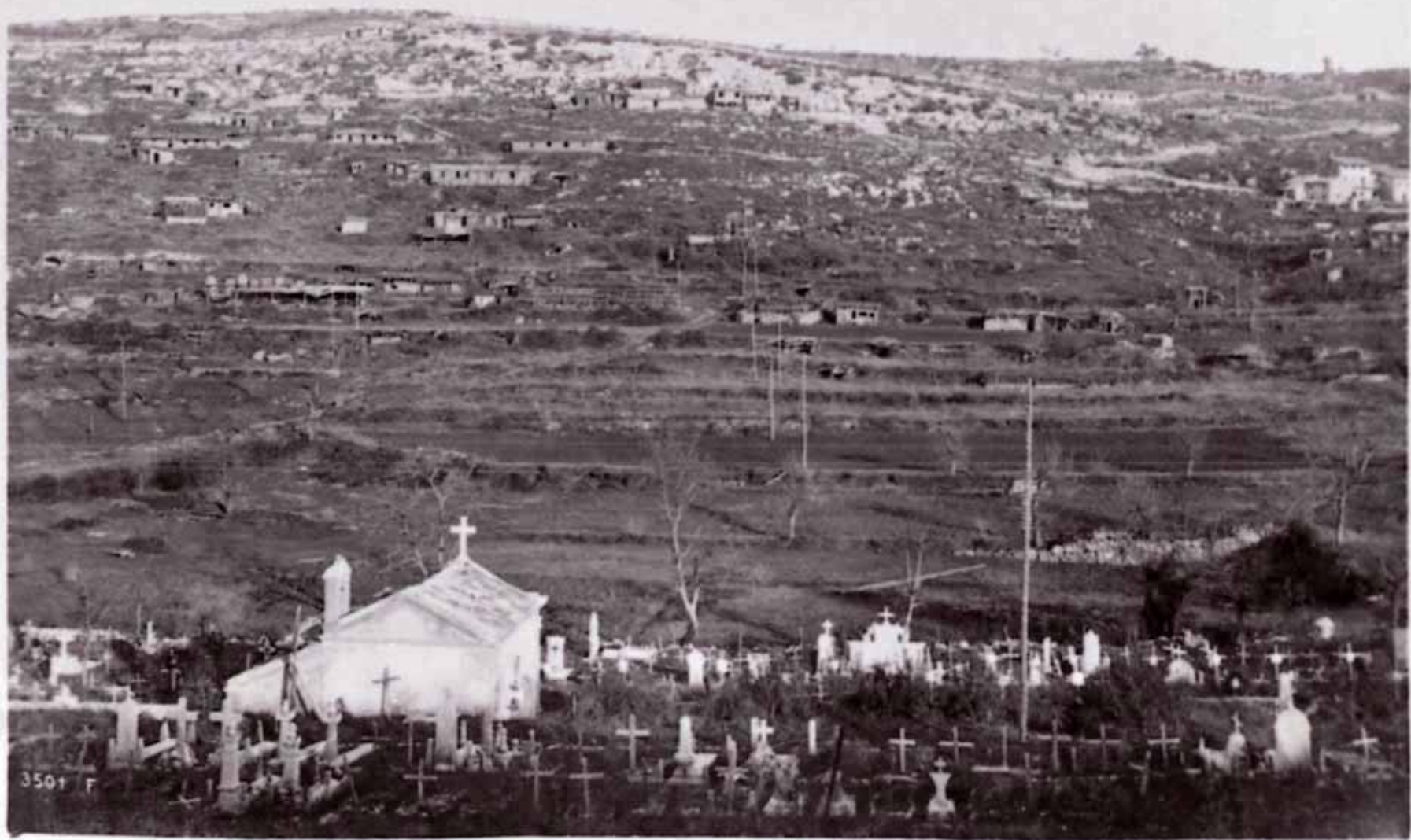




baracchini-ricovero per truppe di II^a linea a ridosso del Debeli vhr



S. Martino del Carso



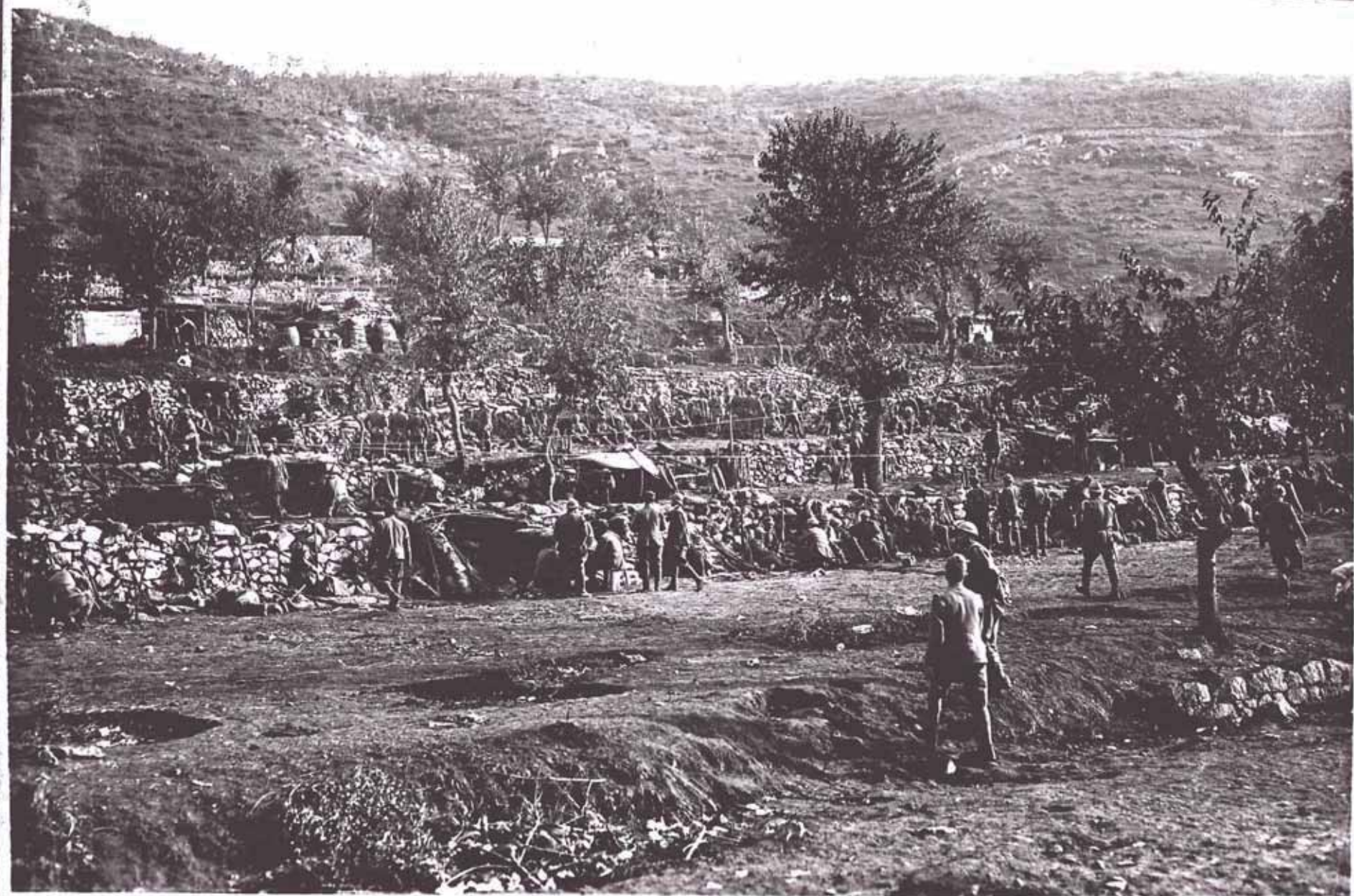
3501 F



Barreche al Vallone - Ned Logem

piccolo cimitero

Monfalcone = accampamento di truppa e riposo

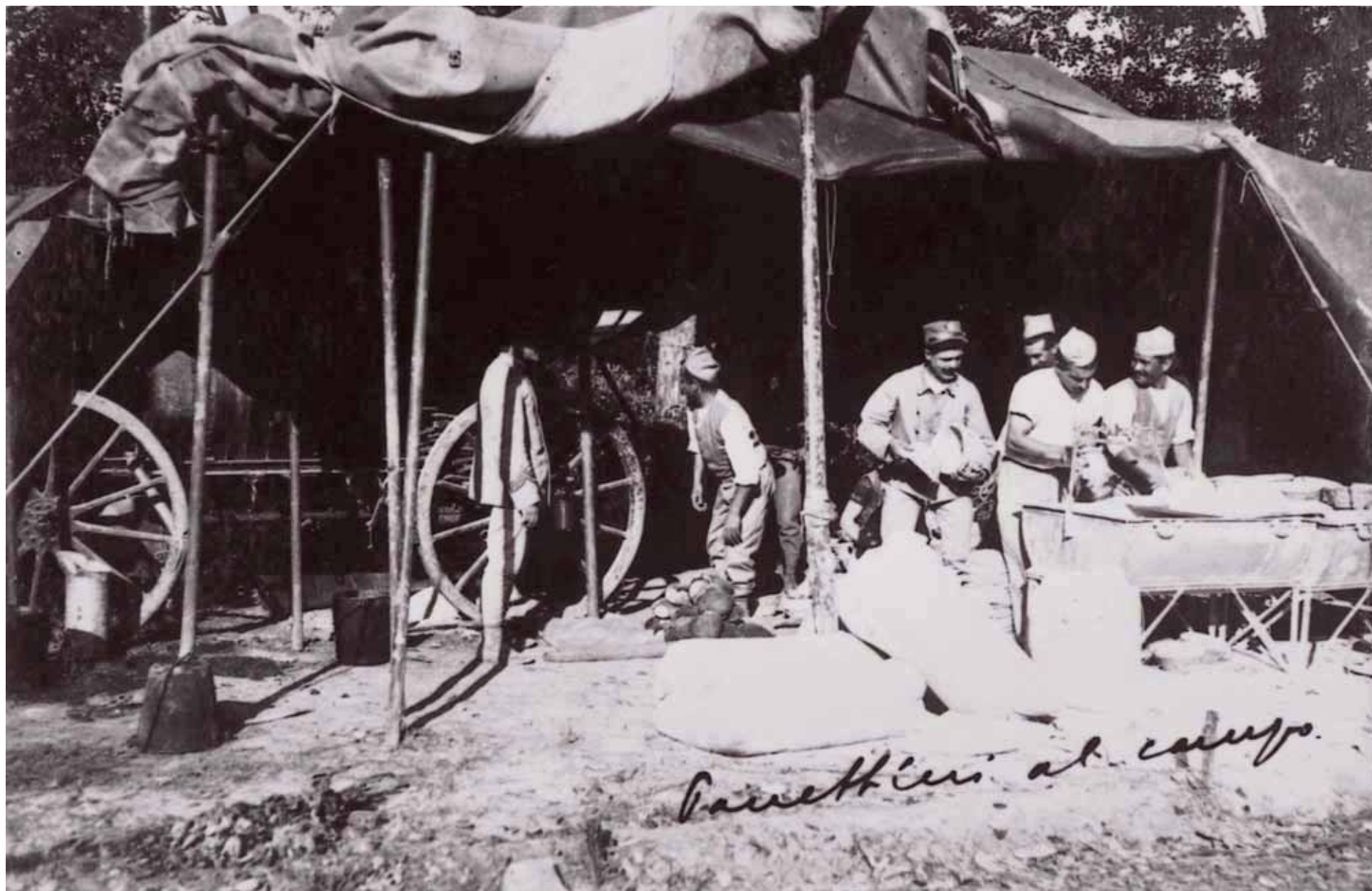




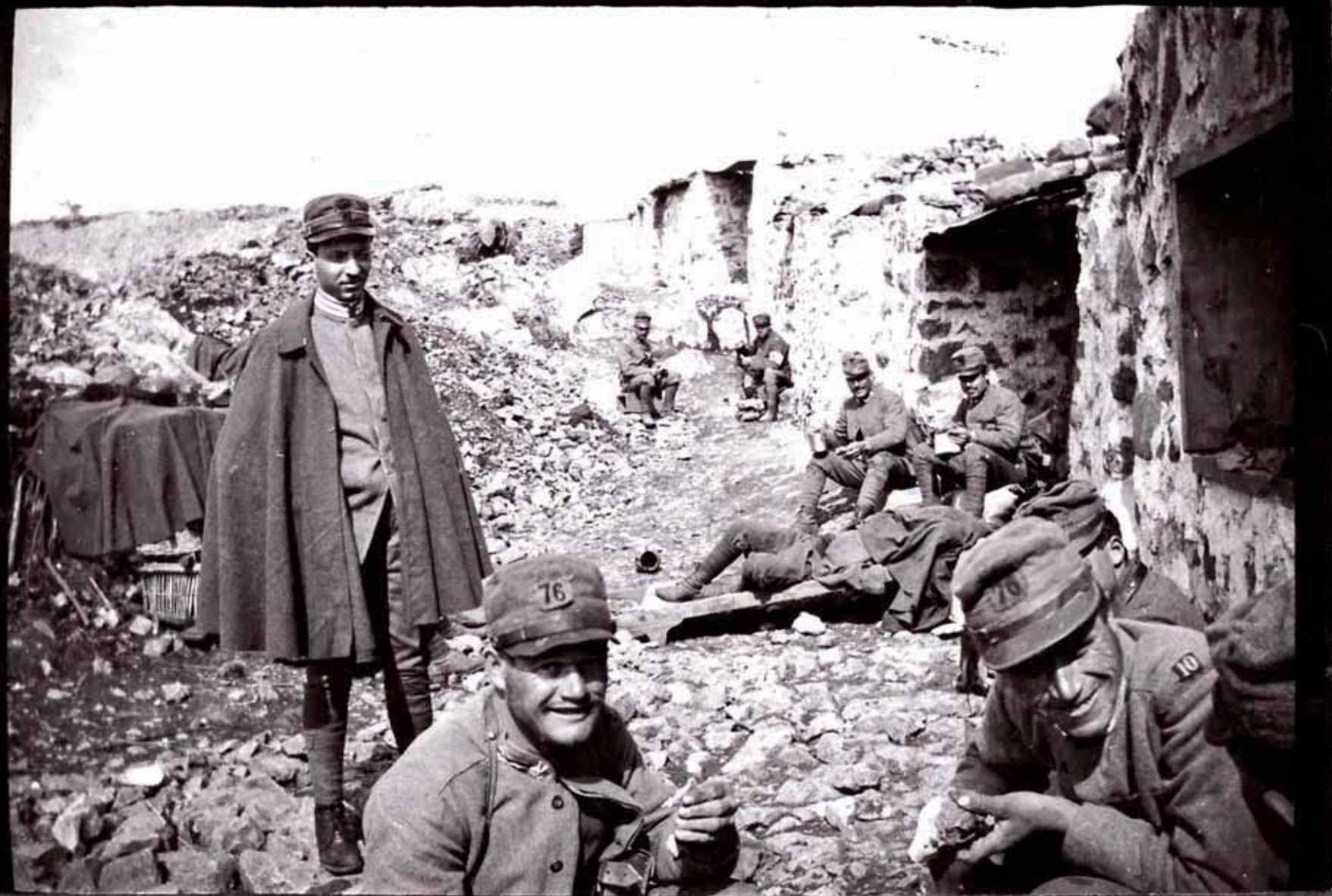
G. F. SOTNIKOV X 21 CM. 1920





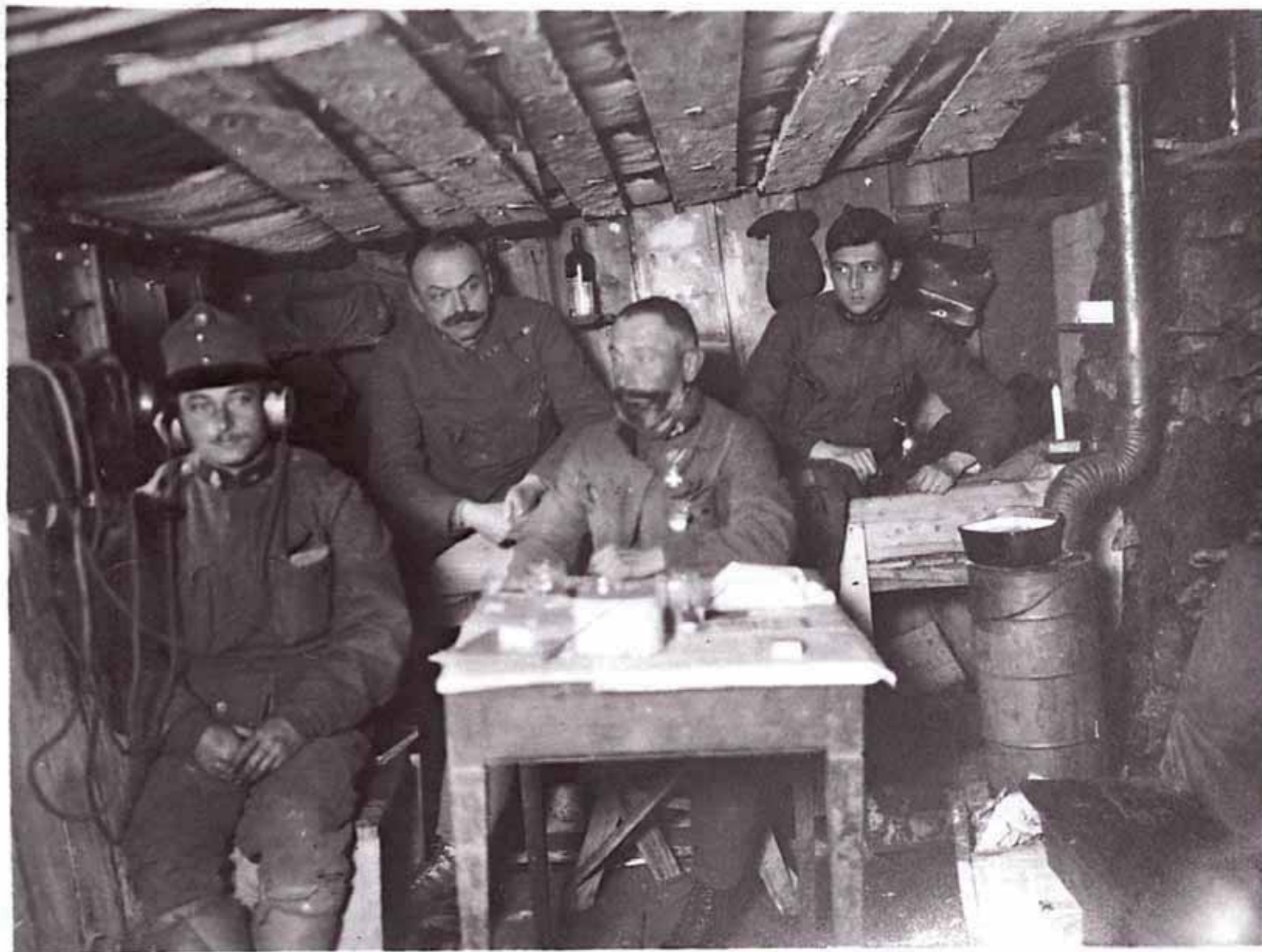


Canettieri al campo.

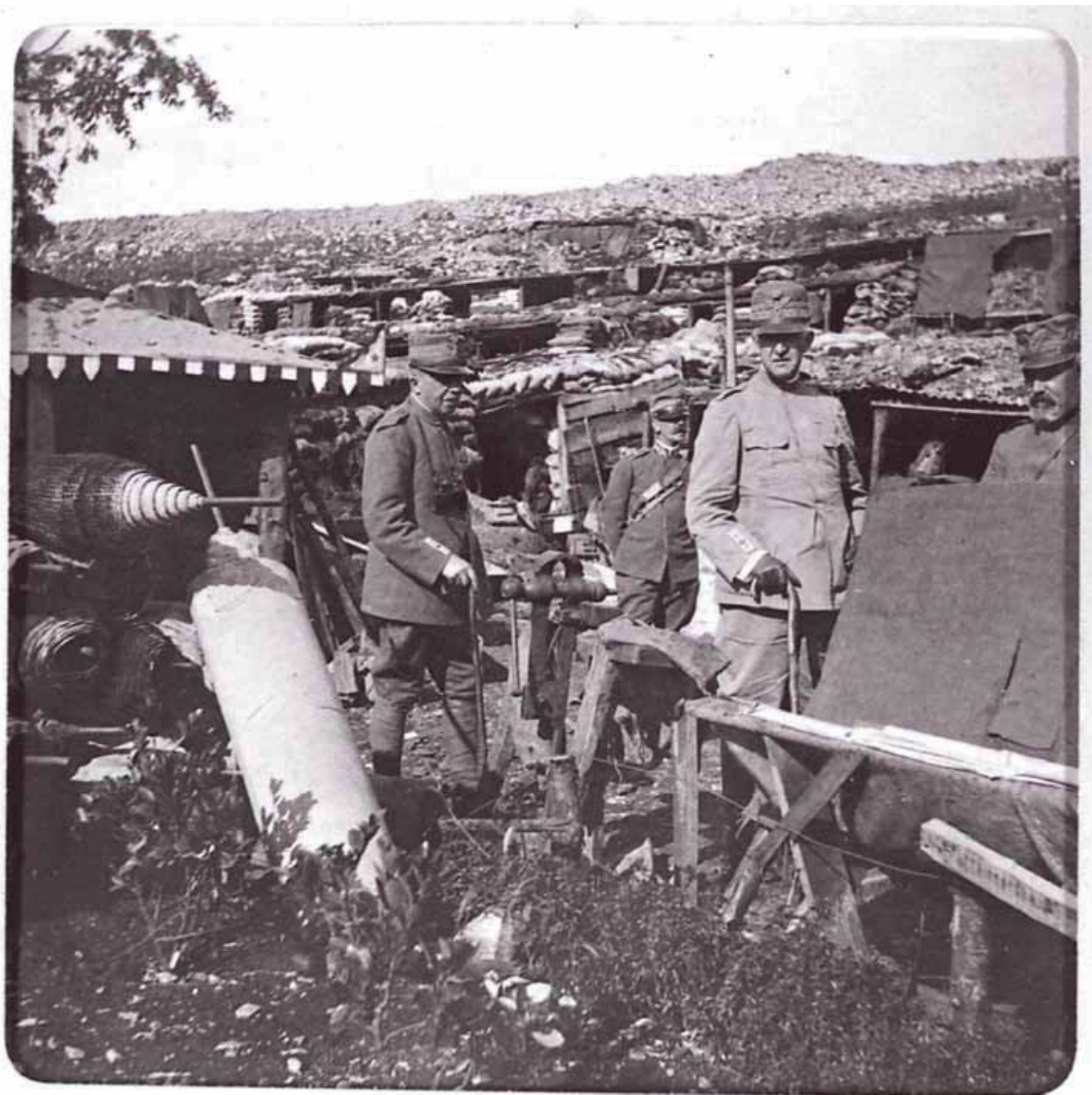


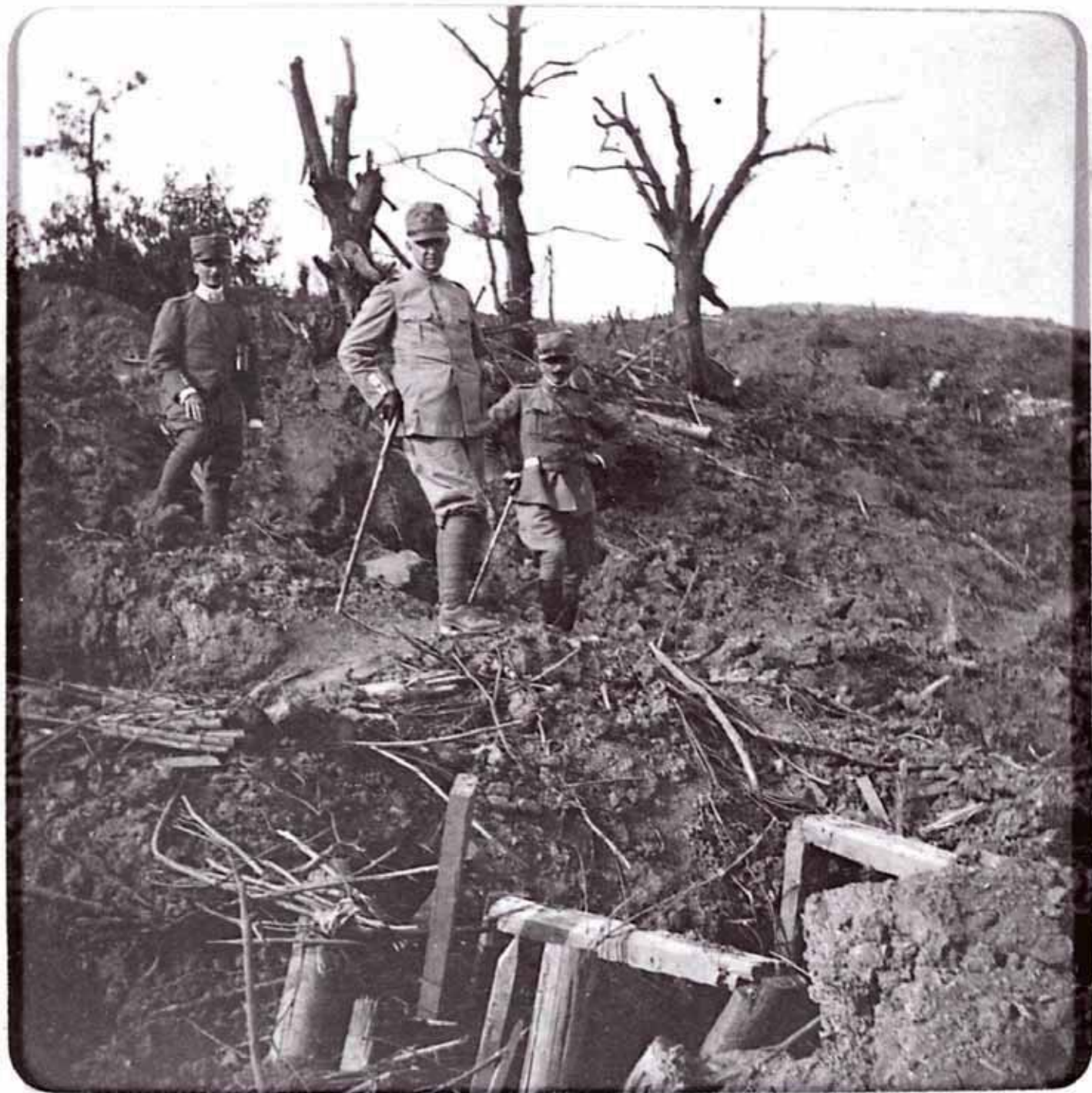
Vita tranquilla nelle trincee. L'ora del rancio

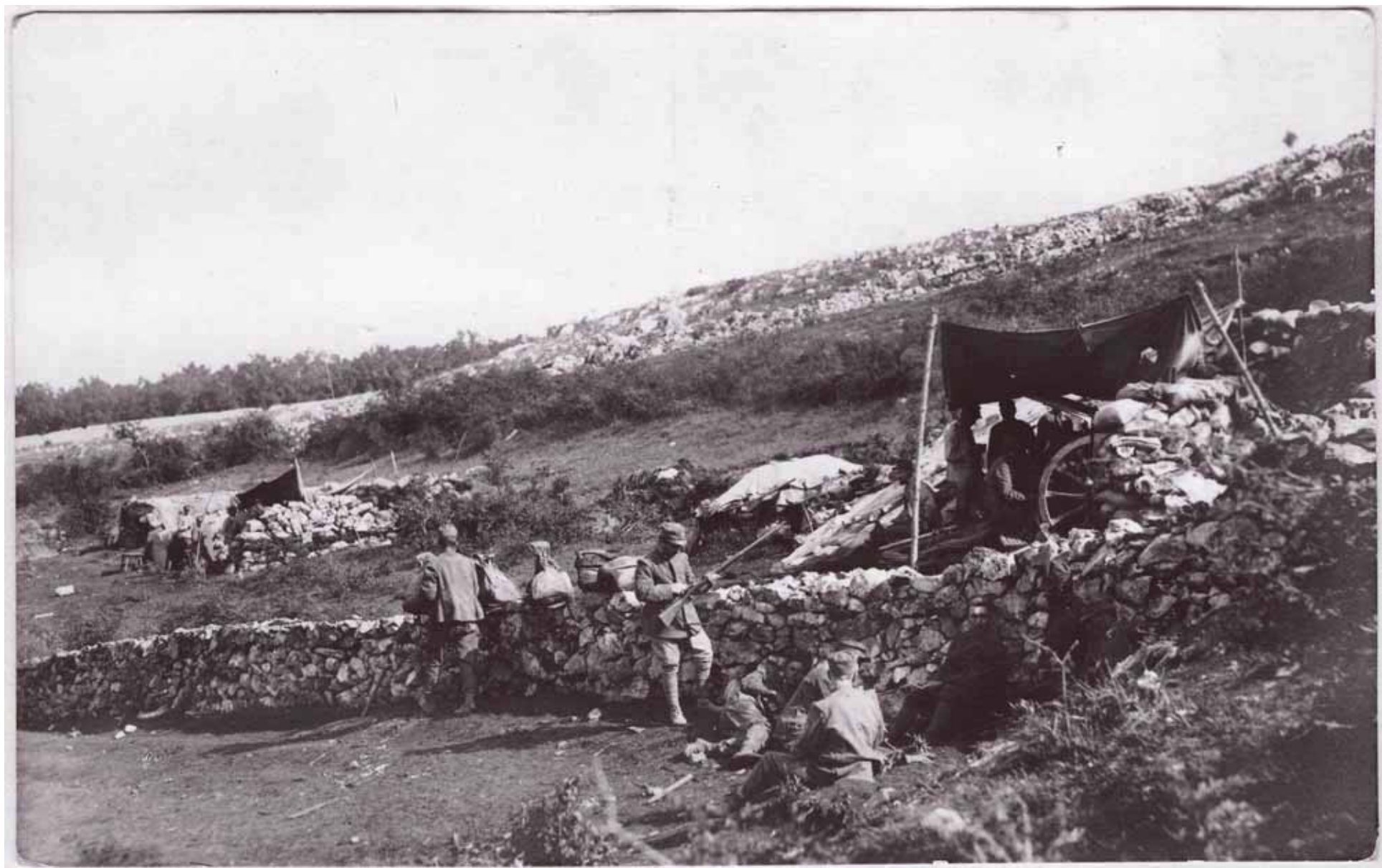




Abschnittskmdo im Unterstand bei Boschini 1/2.1916.









№ 1940 Italien. Unterstände am Fajti hrib 28.10.17







Villaggio Catanzaro

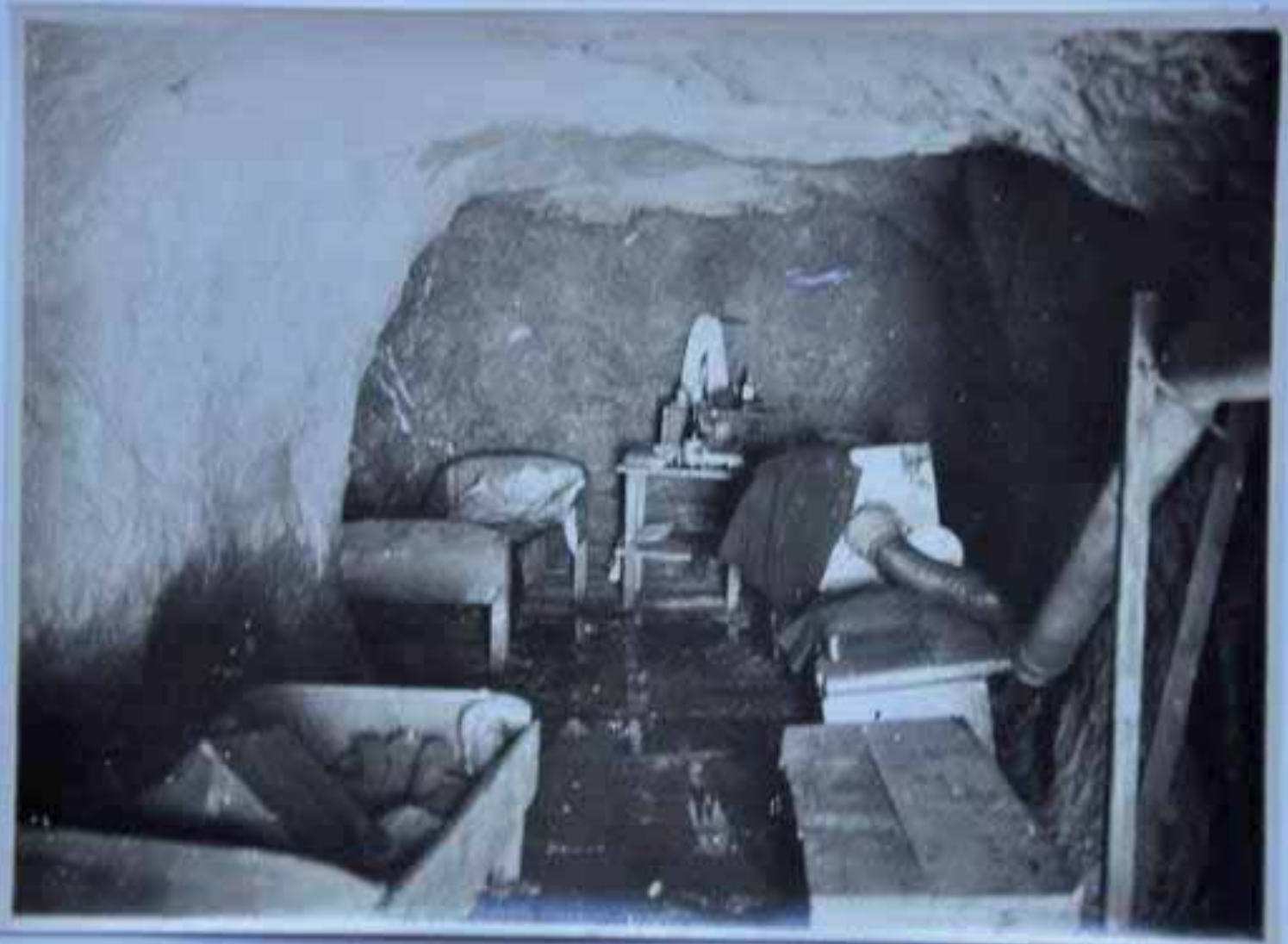


99
Lini bei Arbeit auf Podgora



Pl. Schirmbecher bei neuer Stellung
auf Post 101

DASKE - KACOVEM AU STRUACI 28 AGOSTO 1917



PAVIA - ALBERTA - ...





























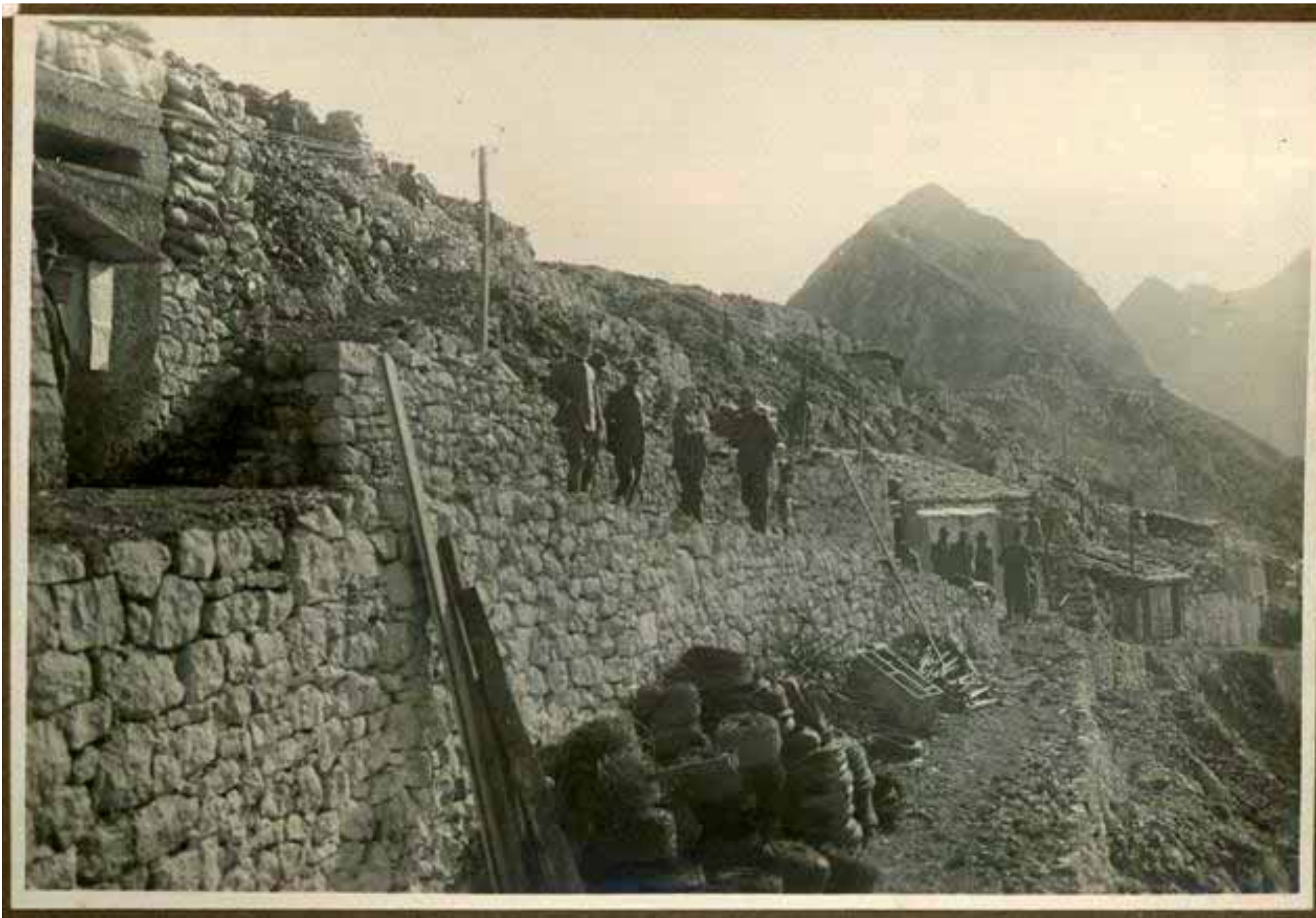


la strada da Vermeigliano a M. Sei Busi con la neve

















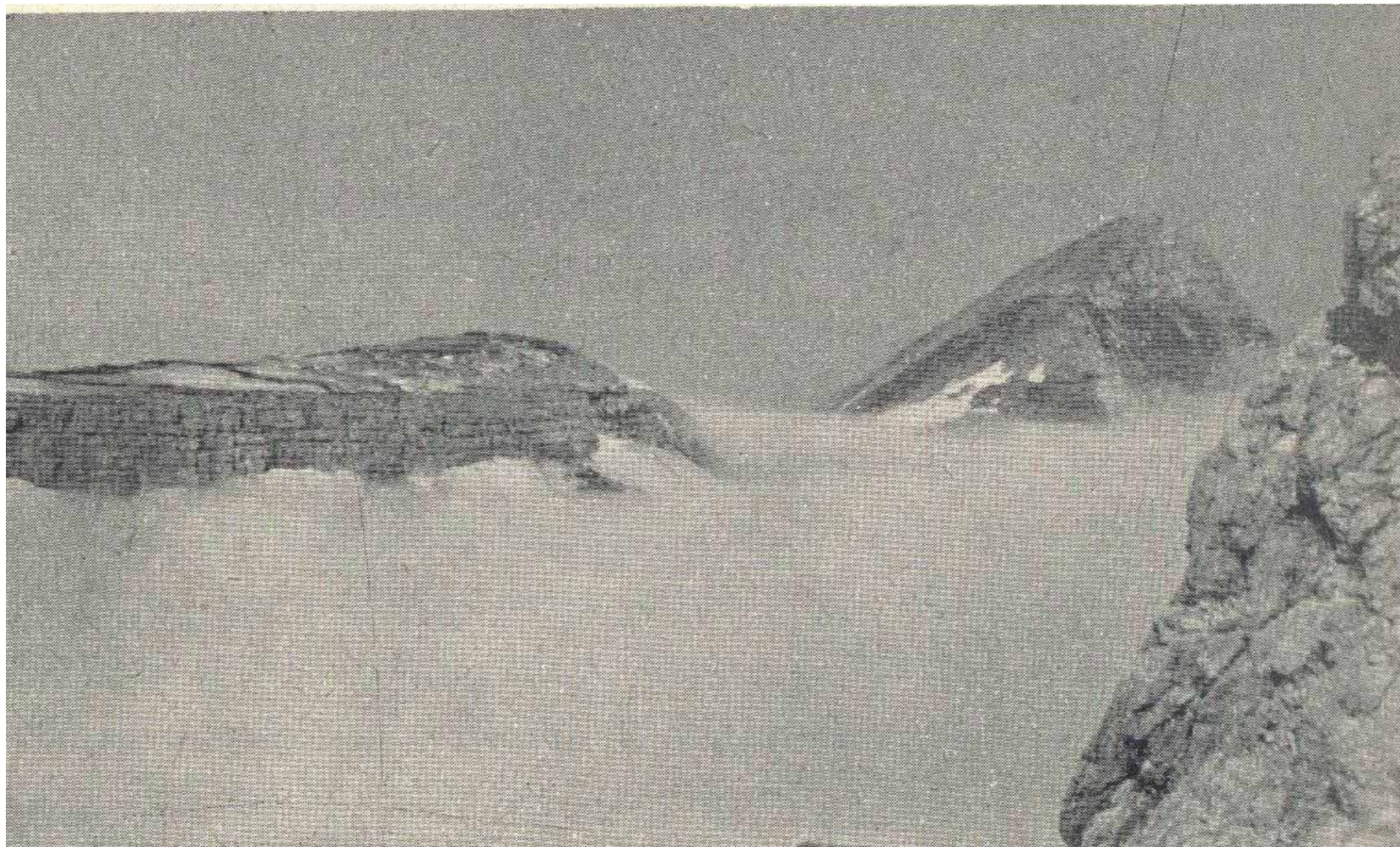










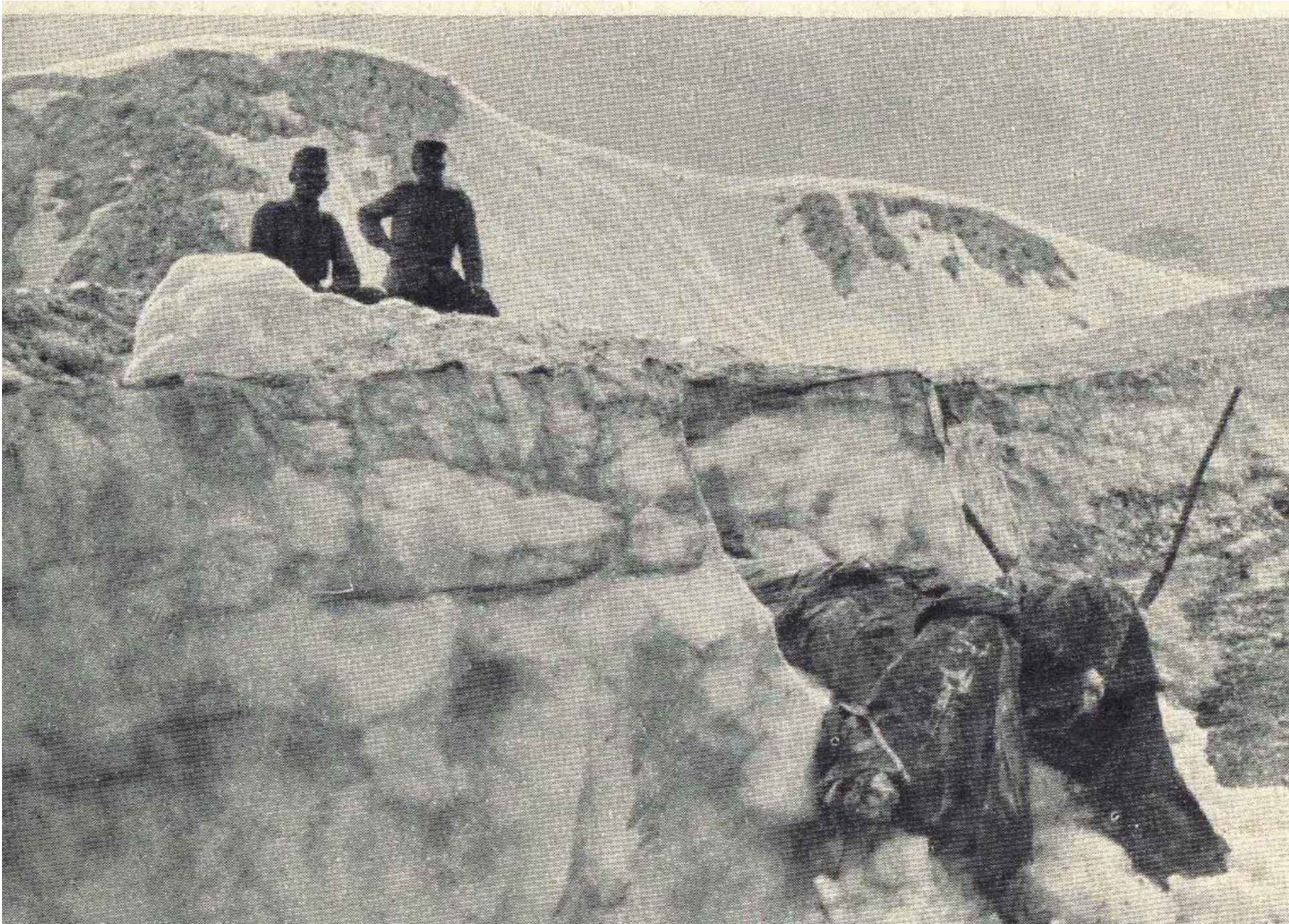


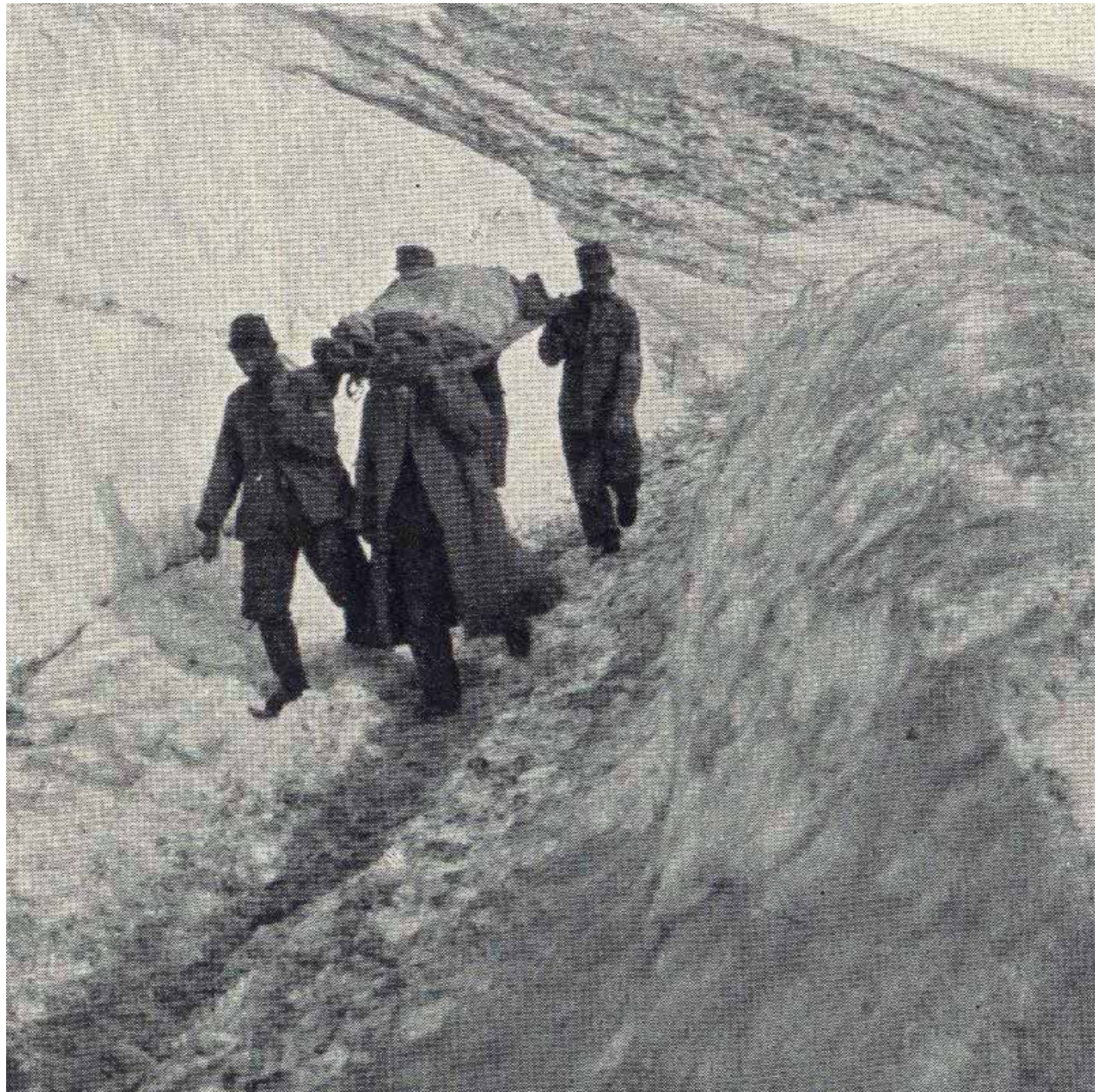






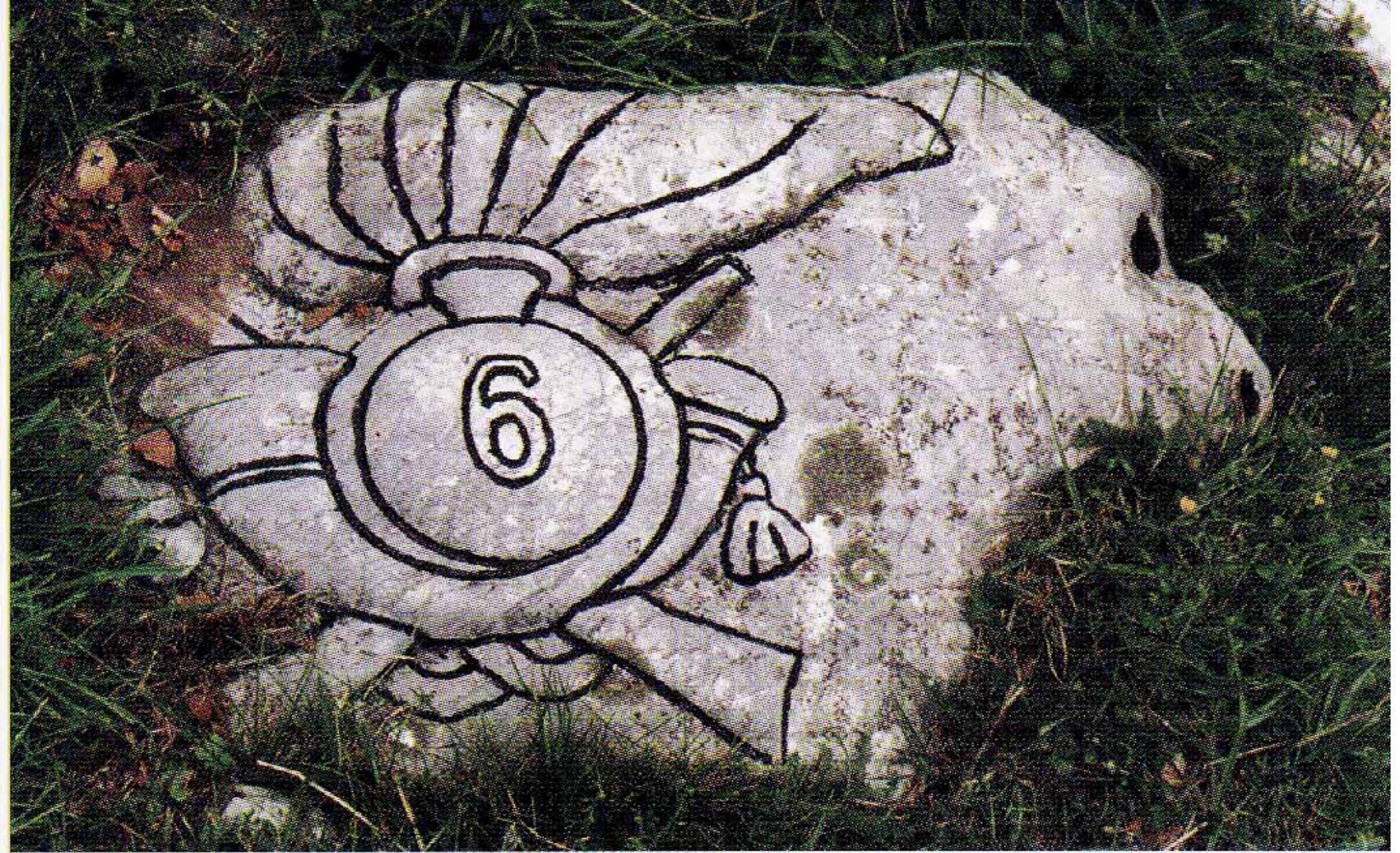


















KREUZER
KAVERNE









Chiesa indicante la fronte occupata nella

1890
al p. 100 e 101



Chiesa di S. Maria
di S. Maria



Q.84 Biglia
Merna Scuola Raconigiano Q.86 Stol
Q.441 Desso Tatti Q.308 Volturnata
Q.874 Villici Heli
Q.71 Grad. di Merna
Gamber
Nati Legno
Q.87
Caltale Campa

QUESTO CAMPO DI BATTAGLIA TRA MERNA E GABRIA NATALE 1916







*Gli uomini in guerra non muoiono quando vengono sepolti
ma nel momento in cui vengono dimenticati*

A. Scrimali

